

Answers: [6.1.1.9 Lab - Install Third-Party Software in Windows 7 and Vista](#)

Introduction

In this lab, you will install and remove a third party software application supplied by your instructor. You will install the Packet Tracer Windows application.

Recommended Equipment

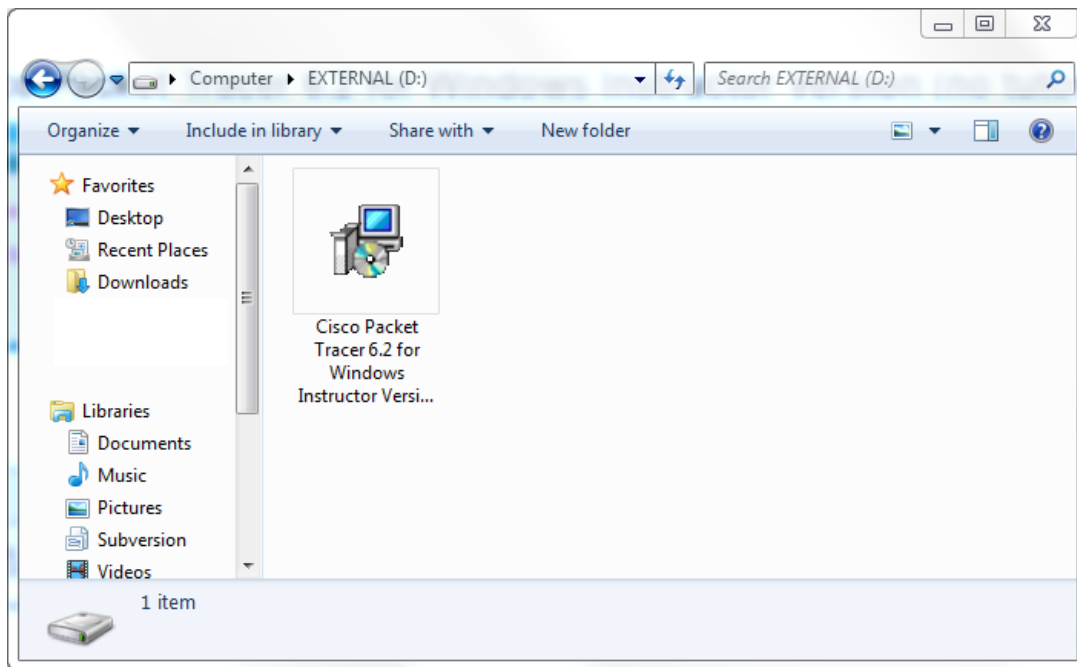
The following equipment is required for this exercise:

- A computer that is using Windows 7
- A flash drive or CD with the latest Packet Tracer Windows install package

Step 1: Locating the Installer

- Log on to the computer with the Administrator account and use Windows Explorer to navigate to the folder where the Packet Tracer installer is located. This folder could be on the local hard drive, on an external flash drive or on a CD.
- Locate the PacketTracer###_setup.exe (where ### is the version number) application. Click the **PacketTracer6.2_setup.exe** icon to start the installation process of the Packet Tracer application. You may need to double-click the icon to start the installation.

Note: The version shown in the file name depends on the version of Packet Tracer you are installing and may vary.



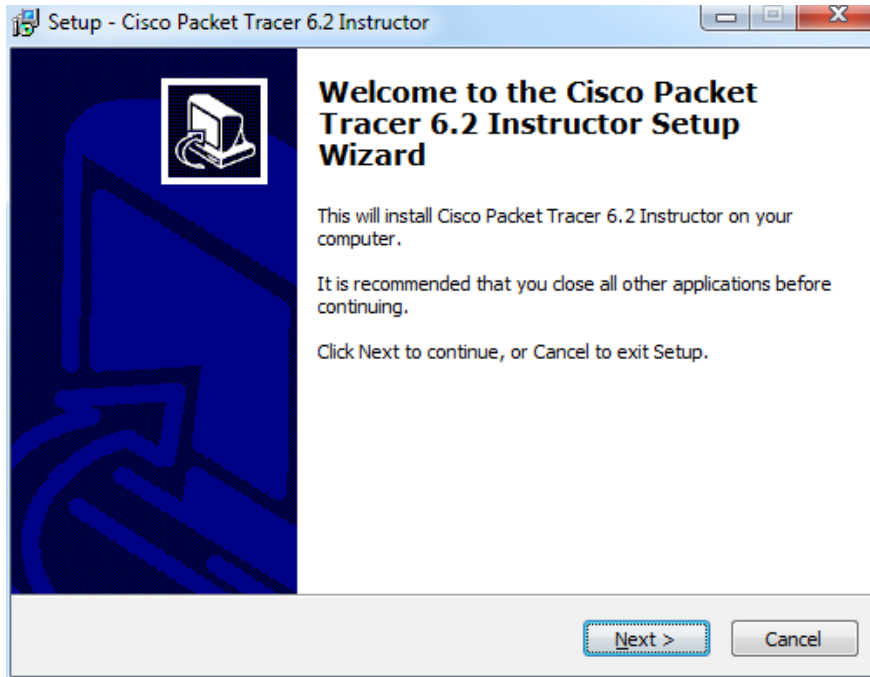
Note: If the **Open File – Security Warning** opens, click **Run** or **Continue**.

Step 2: Running the Packet Tracer Installer

- The **Setup – Cisco Packet Tracer 6.2 Instructor** window opens. Click **Next**.

Lab – Install Third Party Software in Windows 7 and Vista

Note: The window name may not contain the word **Instructor**. It will depend on the version of Packet Tracer being installed.

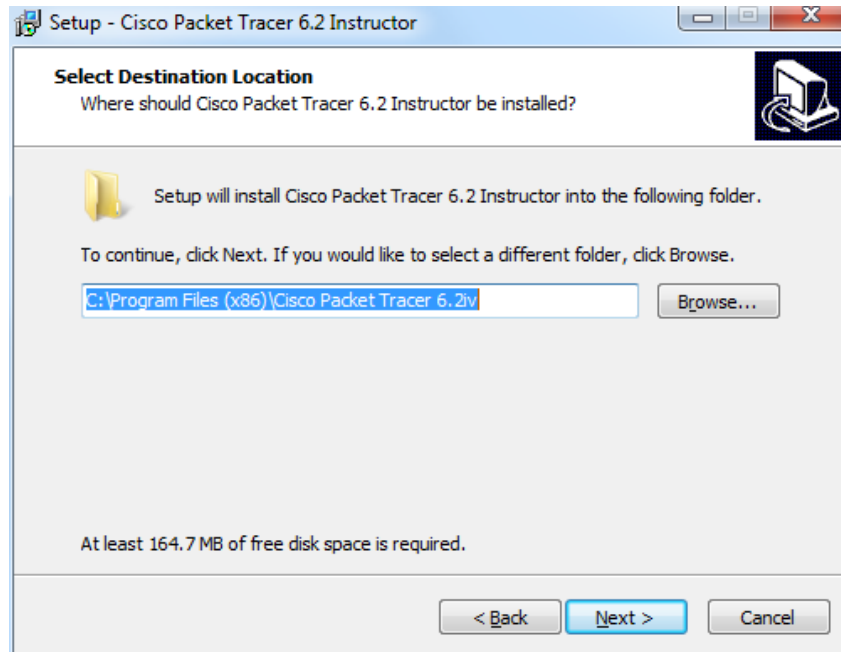


- b. The **License Agreement** window opens. Select **I accept the agreement** and click **Next**.



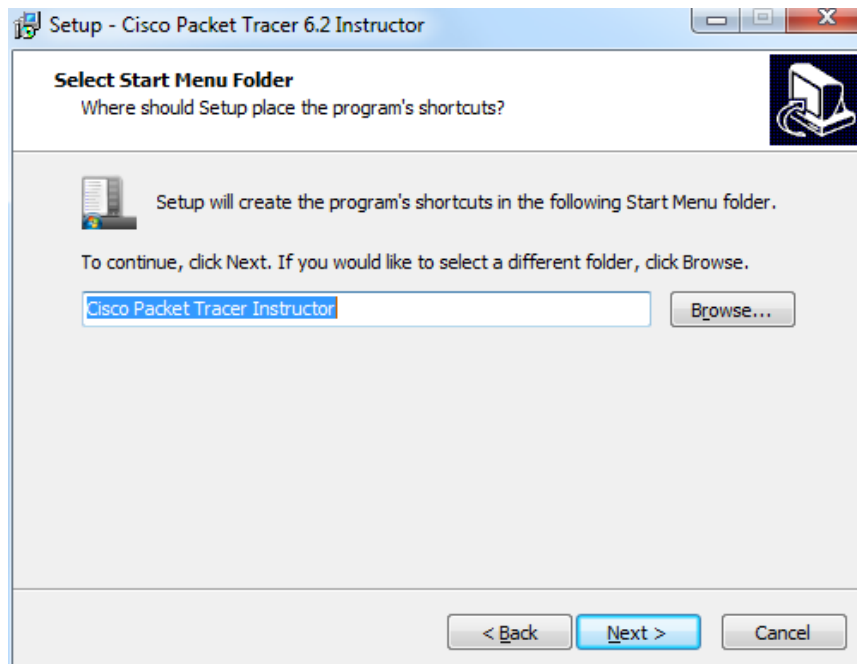
Lab – Install Third Party Software in Windows 7 and Vista

- c. The **Select Destination Location** window opens. Keep the default settings and click **Next**.



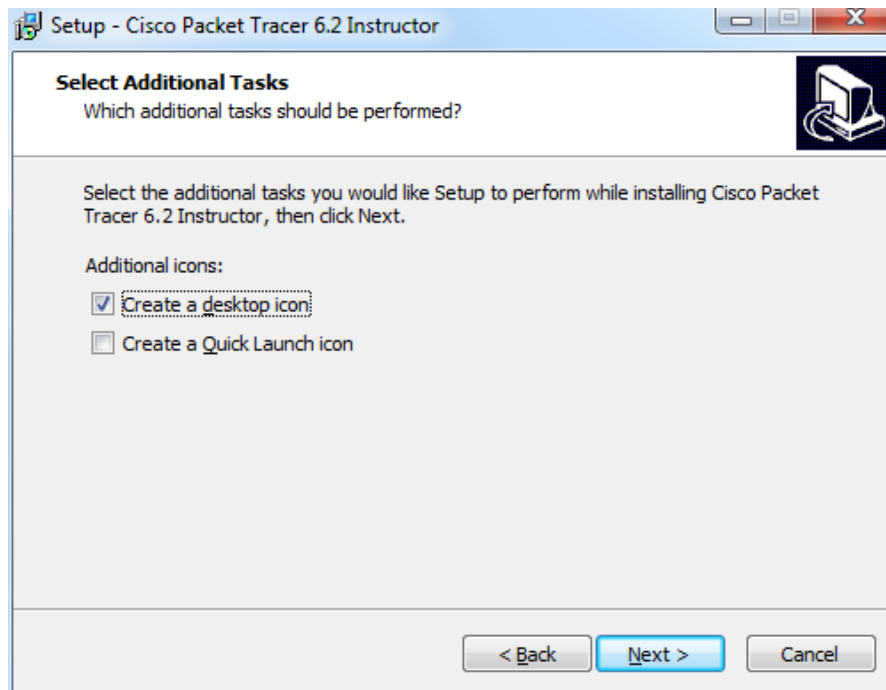
What is the default location for Packet Tracer?

- d. The **Select Start Menu Folder** window opens. Keep the default settings and click **Next**.

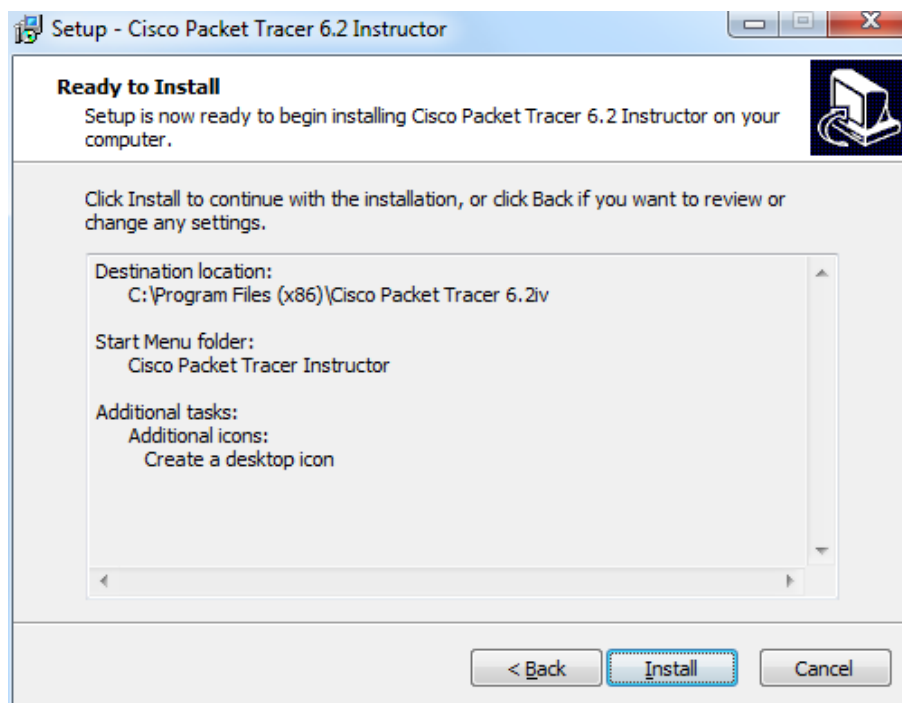


Lab – Install Third Party Software in Windows 7 and Vista

- e. The **Select Additional Tasks** window opens. Keep the default settings. Click **Next**.

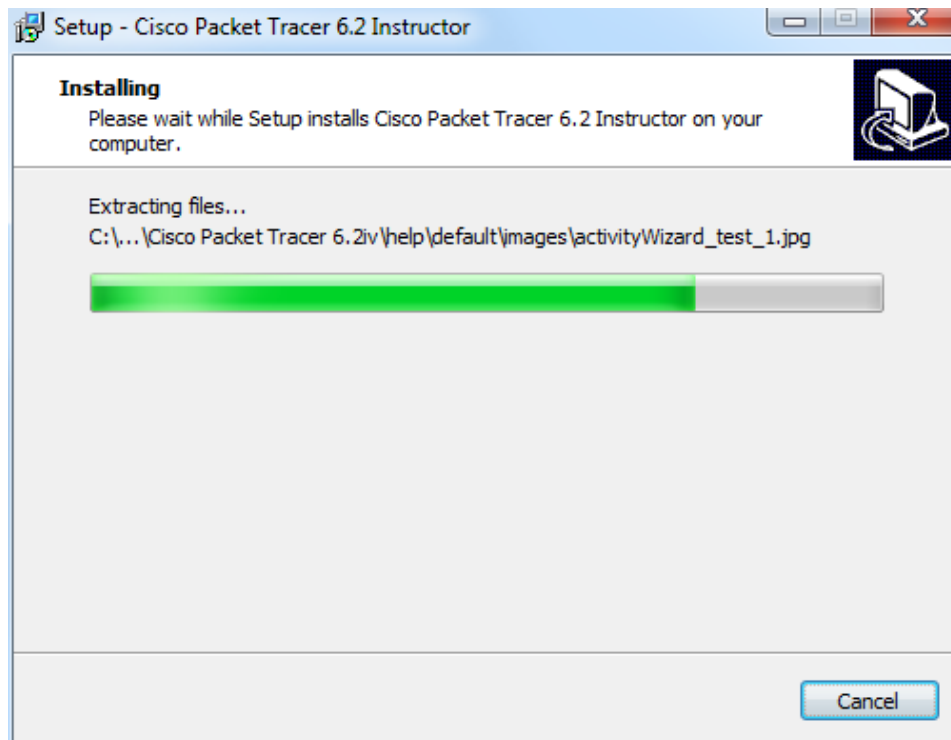


- f. The **Ready to Install** window opens. Click **Install**.

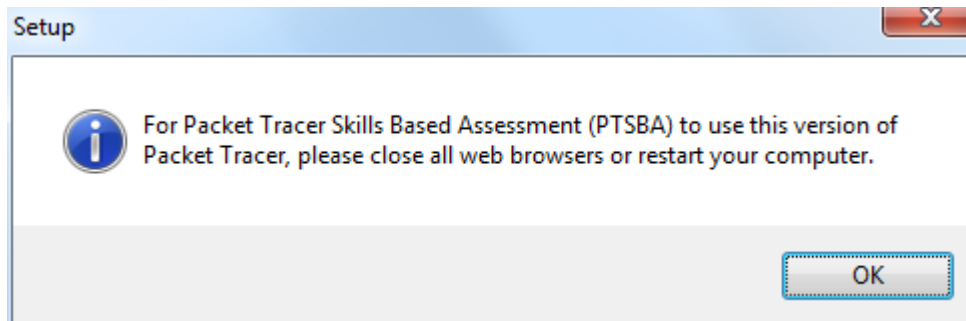


Lab – Install Third Party Software in Windows 7 and Vista

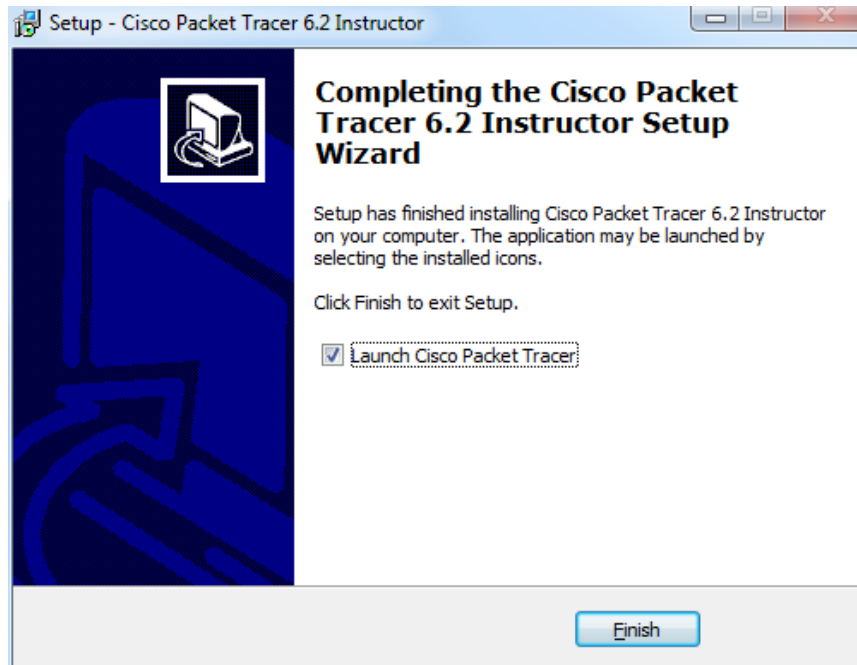
- g. The **Installing** progress window opens.



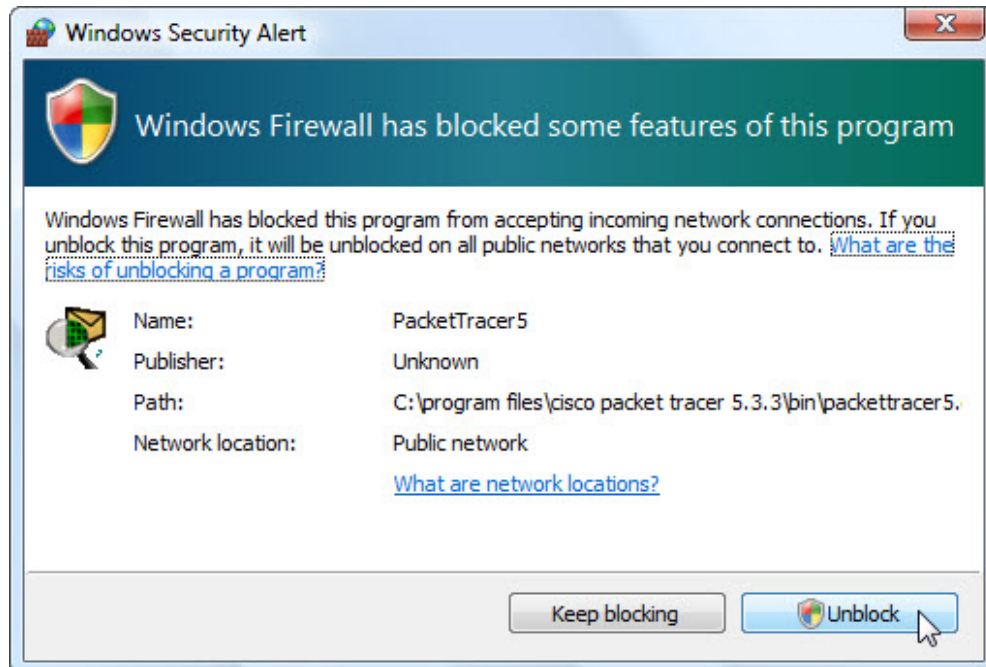
- h. If an information window opens, click **OK**.



- i. The **Completing the Cisco Packet Tracer 6.2 Setup Wizard** window opens. Click **Finish**.

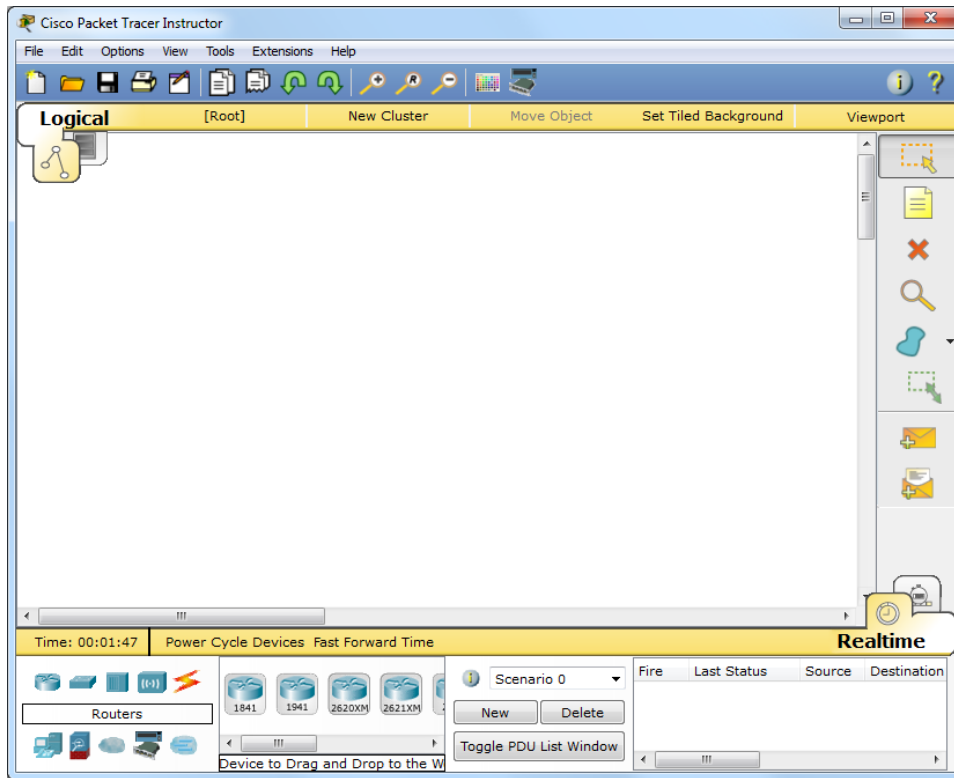


- j. If the **You are running Packet Tracer for the first time** window opens, click **OK**.
- k. If **Windows Security Alert** appears, click **Unblock**.



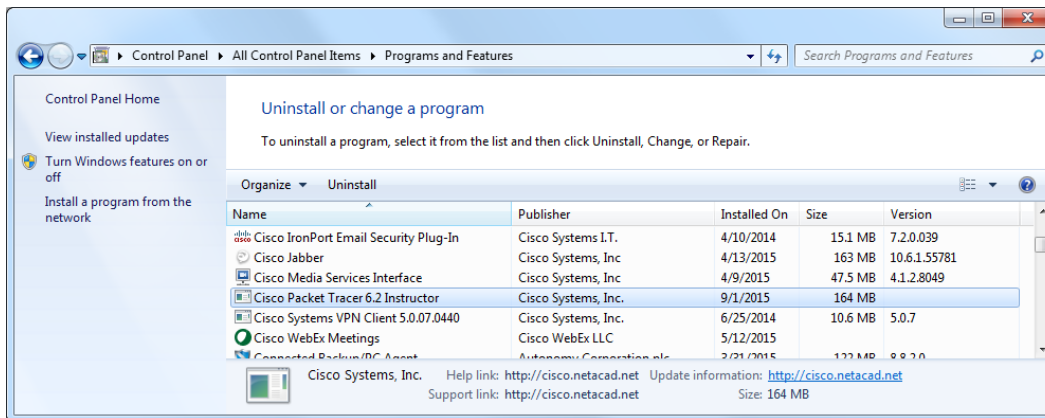
Lab – Install Third Party Software in Windows 7 and Vista

- I. Packet Tracer opens. Close Packet Tracer and all other open windows.



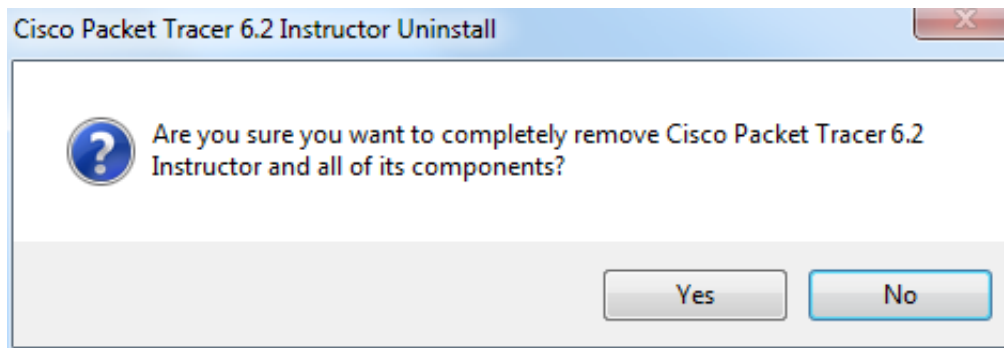
Step 3: Uninstalling Packet Tracer

- a. To uninstall a program, click **Control Panel > Programs and Features**. Click **Cisco Packet Tracer** in the list and click **Uninstall**.

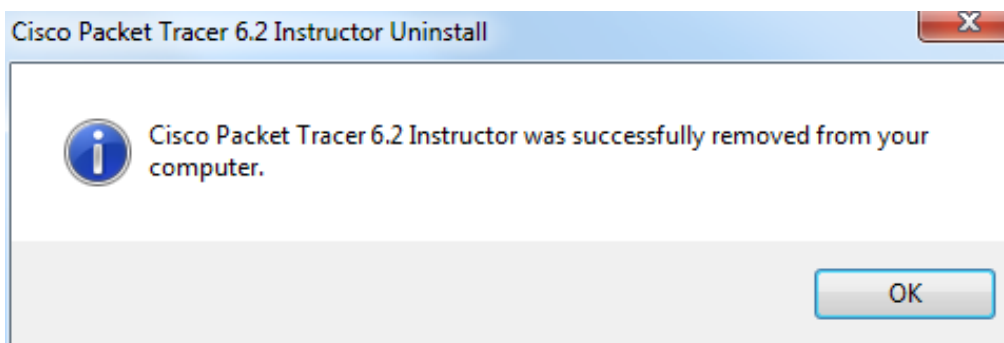


Lab – Install Third Party Software in Windows 7 and Vista

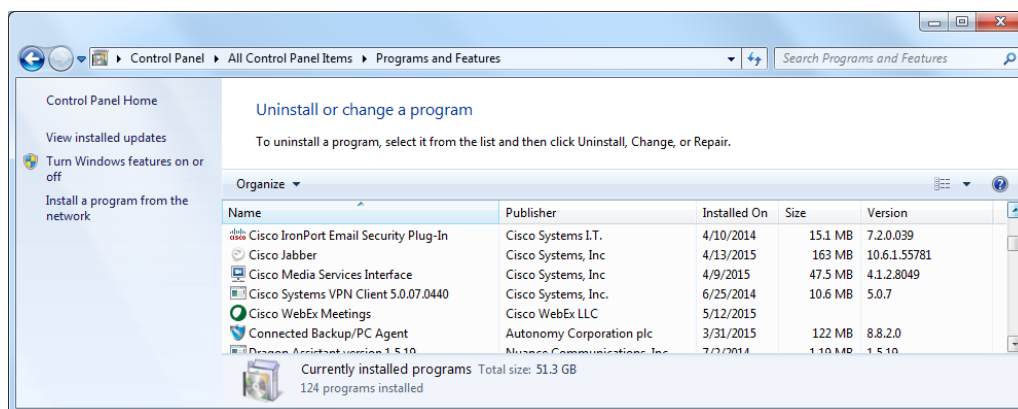
- b. The **Cisco Packet Tracer Uninstall** window opens. Click **Yes**.



- c. When the successfully removed message appears, click **OK**.



- d. Verify the application was removed from the list in the **Programs and Features** window. After the application removal process, the **Programs and Features** window no longer shows Cisco Packet Tracer in the list. Close all open windows.



- e. Future activities in this course will require the use of Packet Tracer. Reinstall Packet Tracer

Reflection

Why does Microsoft recommend using uninstall or change a program to remove an installed application?